

## CONTENTS

### **A Century for Nelson Naturalists**

David Nelson.....2

### **Notable Members of Nelson Naturalists Society**

Eddie Sutcliffe.....4

### **National Moth Night 2009**

Shane Farrell.....7

**Obituaries**.....7

### **NWNU Bryophyte and Lichen Annual Report**

John Lowell.....7

### **NWNU Vascular Plant Report, 2007**

Dave Earl .....9

### **NWNU Vascular Plant Report, 2008**

Dave Earl .....9

### **Society Diary**

Calendars of Meetings of Affiliated Societies.....10

**Contributions for the next issue by the end of August please!**

Contributions are welcomed as e-mail attachments to [patricia.francis@bolton.gov.uk](mailto:patricia.francis@bolton.gov.uk), or on disk, in most PC word processing formats (with a second file in rich text format \*.rtf) or in typescript from contributors who do not have a PC. Illustrations should, ideally, be produced on A4 paper with a margin of at least 2.5cm all round with 'oversized' lettering (14pt normal/body text, if typed) to allow for it to be photographically reduced to A5 (approx 70% reduction) and still be readable.

# A Century for Nelson Naturalists

## David Nelson of Nelson Naturalists Society

On a Friday evening in February 1908 Messrs John Clegg and Isaac Hartley convened a meeting in the vestry of the Salem Church in Nelson and founded the 'Nelson and District' Natural History Society'. Together with 21 persons, male and female a subscription of one shilling per season was agreed and nature rambles and lectures were planned.

The membership quickly grew, the minute books of the meetings held over the following 100 years making a fascinating account of the growth of the society to the present day. In 1914 a special lecture on 'The Housefly' was advertised with the release of 1000 handbills.

Winter lectures were held on Botany, Geology, Zoology and Microscopy in the Cooperative Lecture room, Railway Street. In the first lectures specimens were brought in to illustrate points of interest. It was not until 1921 that a lantern was purchased for the lectures and 21 years later Mr. Turner was presented with a watch for his services as the lanternist.

Summer rambles were numerous, in 1921 there were 14 rambles, and a favourite was walking out in the Twiston direction via the tearoom at Hill Foot. These rambles were always voted a success even those 'marred by the unsatisfactory state of the meteorological conditions' - a problem that still recurs! Invitations were also accepted to join rambles with Burnley Naturalists and Crosshills Naturalists Societies.





The Society also sought to promote Natural history more generally. In 1910 they lobbied the committee of the Free Library to improve the natural history section, requested that the Parks were made more useful by the addition of name plates for the plants and sent a deputation to the Town Hall to request that part of Marsden Hall was made into a museum. The same year a petition was sent to the Prime Minister expressing sympathy with the 'Access to Mountains' bill, an early but failed attempt at this time to obtain freedom to roam in upland areas.

In 1929 the Society held a Grand Reunion to celebrate 'the coming of age of the society' with a concert, dancing, games and supper. The 1934 Christmas social drew 140 adults and 12 children. Mr. Turner the Honorary Secretary reported that the ice creams at 10 o'clock in the morning after the dancing were a great success, 'few refused one, the children were delighted with them and the adults too, including myself.'

During the Second World War nine members were in the armed forces and a Comfort Fund was established to send out parcels to them. The restriction of transport services at home made summer rambles difficult and they were confined to the local area. At the same time the demands of the war effort put other pressures upon the natural world. Brierfield Wood was cut down and meadows and footpaths were ploughed up. Members set to replanting trees and charting paths so that they could be restored when peace returned. Lecture fees were donated to the Aid the Russia's Fund and the Society tried to transfer its deposits to War Certificates but the money was returned as Societies like ours could not hold these certificates.

Recording began soon after the Society was formed. An area was fixed upon about 10 miles radius of Nelson which made a good days walk of anything up to 20 miles there and back sometimes using the bus or railway. Recorders for Botany, Ornitholo-

gy and Entomology were appointed and over the years several Botany Classes were held to assist members in developing their skills of identification. Many of these early records have become the historical part of national databases which enable assessments to be made of changes in species distribution though factors such as habitat loss and climate change.

The membership swelled to 150 members in 1951 when an Annual Competition of lantern slides, pressed flowers, insects and essays was started as well as the society magazine 'The Pendle Naturalist'. In 1955 a trophy was bought, 'The Arthur Turner Memorial Botany Cup' to be awarded on competition night.

The present name, 'Nelson Naturalist's Society' was decided at the annual meeting of 1966 when it was resolved that the name of the Society should be shortened.

The 50 years Jubilee was celebrated in 1968 with a film show in sound and colour 'Highland Birds' followed by refreshments and dancing. Reaching 80 years in 1988 was celebrated with a special lecture by Mrs. Jane Ratcliffe, author, television and radio personality.

These are just a few of the facts which have been gleaned from the society's minute books. A hundred years is a long time and there are several names which span a large part of this time in the history of the Society some of whom are highlighted in the following pages. In the spirit of Alan Brindle let us look forward to 'another enjoyable year in the country around Pendle'.

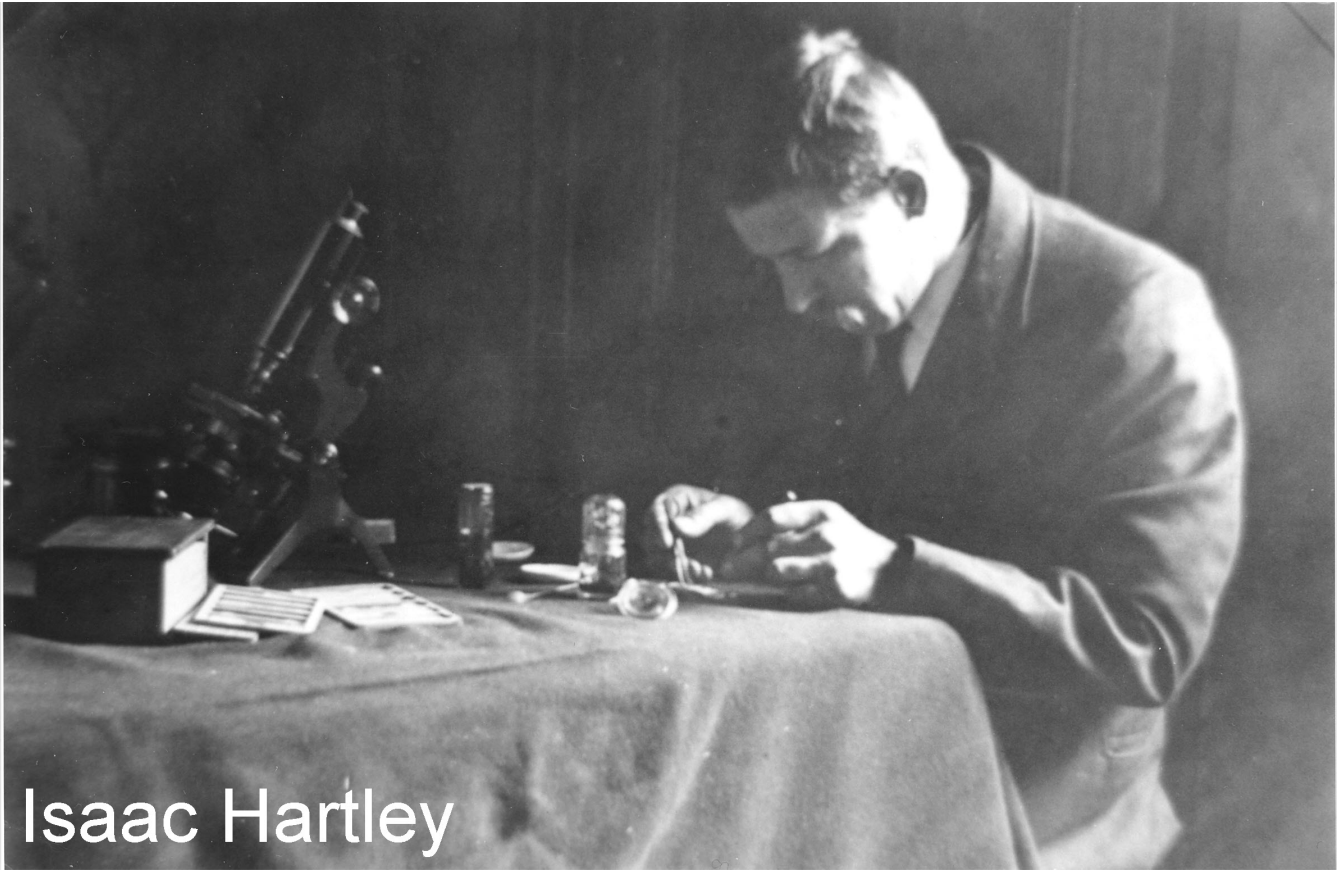
## **Notable Members of Nelson Naturalists Society and their Contributions to Natural History**

**Eddie Sutcliffe  
of Nelson Naturalists Society**

ISAAC HARTLEY AND HOLMES ELLIS - both were fellows of the Royal Microscopical Society and members of Nelson Naturalists. Isaac Hartley was a founder member. The Society archives contain a remarkable manuscript written and illustrated by these two members in 1926, concerning the association of the parasitic plant *Lathraea squamaria* (Toothwort) and its host plants.

RENNIE AND GORDON WOODS – They were father and son, both members of the Nelson Naturalists Society and keen entomologists, they were at the forefront of wildlife photography particularly in the field of lepidoptera. Several of their photographs of butterflies and moths were used to illustrate articles in magazines and books, including those written by one of the best known lepidopterists of that time, L H Newman. Gordon had another claim to fame in that he took the part of the small boy - Tim - in the Romany series broadcast by the BBC in the late 1940's and is portrayed in some of the photographs illustrating Romany's (G Bramwell-Evans) books.

FRED TURNER - along with his wife, a very active member of the Society for many years, particularly in the field of botany. His major contribution to the Society was a hand written booklet containing records of flowering plants, liverworts, mosses, lichens and fungi in North East Lancashire between 1908 and 1966. These hand writ-



Isaac Hartley

ten records were transcribed into a typed copy, arranged as the original, by FREDASTONE, recorder for the Society in the 1990s.

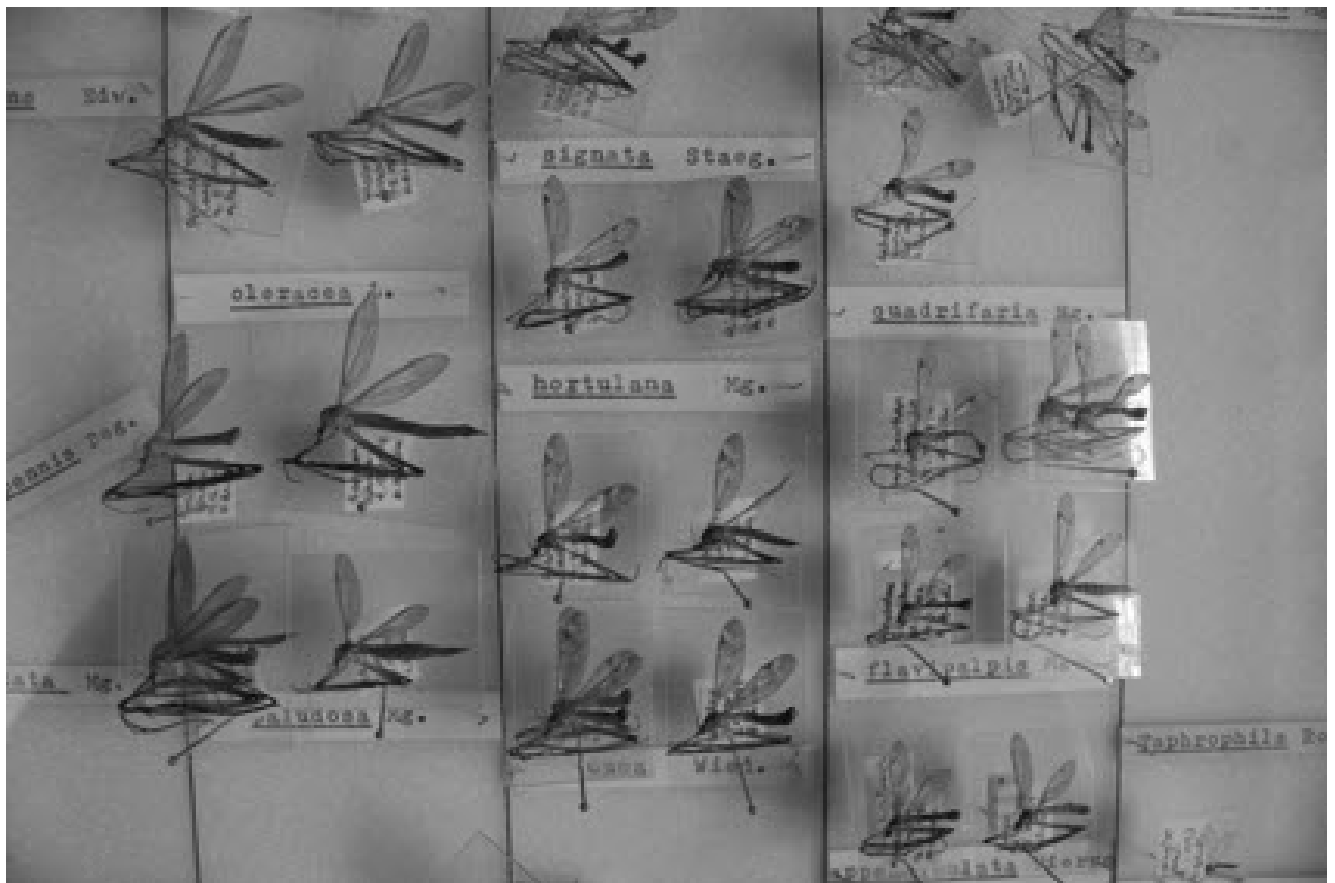
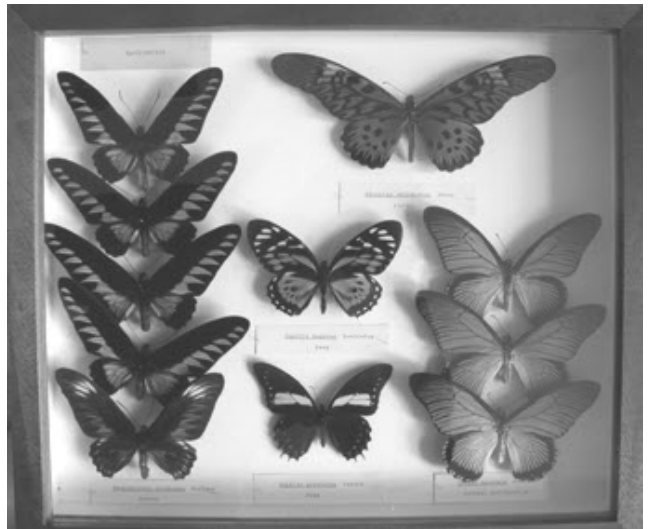
ARTHUR TURNER - botanist, long time member and secretary made a study of Catlow Swamp putting together a monograph detailing the unusual geology of limestone rich springs flowing over a thick layer of peat and giving rise to conditions for some of the rarest plants to be found locally.

ALAN BRINDLE – was a member of the Society from a very early age until his death in 2001. He was one time secretary and also the entomological recorder for many years. The society has, in its archives, hand written and typed records of insects of North East Lancashire compiled by Alan for 1926 to 1953 (excluding 1941-45 when he was in active service). It is interesting to note that he would be 11 years old when these records were started. Alan was, for 30 years, Keeper of Entomology at Man-



Arthur Turner

chester Museum and during this time wrote over 200 papers and several books. He was a member of the Royal Entomological Society, president of the Yorkshire Naturalist Union and an honorary member of Nelson Naturalists. Shortly before his death, Alan donated to Towneley Museum and Natural History Centre his notebooks and a large collection of insects in their original mahogany cases. These are available to be viewed by the public on request.



**Exhibits from the Brindle Collection**

## National Moth Night 2009

A date has now been fixed for the next National Moth Night, the annual celebration of moths and moth recording run by Atropos and Butterfly Conservation. National Moth Night 2009, the eleventh such event, will take place on the nights of Friday 18th and Saturday 19th September 2009. Two nights are included because of the eccentricities of the weather at that time of year. However, it also provides even more of an excuse to go mothing in new and exciting places. The theme of this years event will be migration and there will not be any specific target species or habitats. More details about the migration theme will be circulated nearer the time, but please make a note of the dates in your diary now.

**Shane Farrell, VC58 Cheshire County Macro-moth Recorder and Moth Officer, Butterfly Conservation Cheshire & Peak District Branch**

## PAT MILLIGAN

We were sorry to learn of the death this October of Pat Milligan, a long term and much valued member and president of the Union. He will be remembered as enthusiast, always keen to share his knowledge of natural history and in particular his encyclopedic familiarity with garden plants and trees. He was not a mere dilettante like most of us, having gained a first class honours degree in Botany from Manchester University after retiring from his career in chemistry. He will be greatly missed.

## OWEN McCANN

We are sad to record the death of Owen, an active member of the bryophyte and lichen group. Whilst ill-health restricted his participation recently, many will remember his valiant efforts to keep up with meetings in spite of growing health and mobility problems, and his love of lichens.

## NORTHWESTERN NATURALISTS' UNION BRYOPHYTE AND LICHENS SECTION REPORT 2008

We started the season with a visit to Worsley, guided by Audrey Locksley. The woodland proved to be considerably richer than expected from earlier records, and many more species were added; the most surprising, perhaps of the new records was *Rhynchostegiella tenella*, on a mortarred sandstone wall. The highlight of the day was undoubtedly the large and flourishing colony of *Tortula freiergii* on a sandstone bridge of the Bridgewater canal. The following month was aimed at beginners, and we were pleased to have three new people join us at Barrow Bridge. We were able to demonstrate a good variety of epiphytes without even leaving the car park, and the wall bordering the brook provided us with many saxicolous species. Among the woodland and streamside species the most exciting was probably *Nowellia curvifolia* on a well rotted log.

We were greeted at Formby Dunes with a heavy down-pour of hailstone, but this soon cleared to provide a bright and cold day. This area of dunes is relatively poorly

recorded and during the morning we recorded a relatively poor 36 species, including the usual dune species. The most interesting was *Lophozia excisa*. During the afternoon we travelled north, to the dunes around Ainsdale in search of some of the scarcer species. We failed to find *Petalophyllum ralfsii* at a couple of sites where it has been recorded recently, and also failed to locate *Moerckia hibernica* and *Riccia cavernosa* in some promising slacks (both of these latter species have not been recorded from the dunes for some years). More promisingly, we did see *Drepanocladus sendtneri* and *D. lycopodioides* in the first large slack south of the visitors centre.

Jim Adams and Wendy Nelson again led the May meeting; we visited Eaves Wood in Silverdale, a rich reserve with deciduous woodland and limestone pavement. We saw *Porella arboris-vitae* in great quantity and the limestone rock faces had *Marchesinia mackaii* and a small patch of *Cololejeunea calcarea*. In the more open areas there were several patches of *Breutelia chrysocoma*, and we were especially pleased to see *Rhytidium rugosum* in the limestone pavement.

In July Joan Egan took us to Dale Head Edale, some serious climbing on a very hot day. We found a wide variety of *Sphagnum* species and a good flora in the stream and wet rocks including very abundant *Hygrohypnum ochraceum*, *Jungermannia sphaerocarpa* and *J. pumila*. The oddest find in this markedly acid site was a large boulder, possibly an erratic, with very large cushions of *Tortella tortuosa*.

Six members led by Dr Martha Newton met at Ecton on a damp day which provided very suitable weather for bryology. We saw a good range of

expected calcicoles and a number of more unusual species. Amongst the *Orthotrichum affine* were specimens of *O. striatum* with its short seta and smooth capsules. This is not a common species in Derbyshire. Both species of *Conocephalum* were found by the river; when seen together there is an obvious difference in appearance of the thallus.

The Goyt valley outing led by Norman and Alan Bamforth was particularly interesting and productive. An impressive list of species included *Sphagnum russowii*, rare in Cheshire, and two new vice-county records: *Sphagnum quinquefarium* and *Racomitrium affine*. *Schistostega pennata* was found in a small sandstone hollow-known for the locality but always exciting to see.

On our visit to Helsby hill in December we failed to re-find *Orthodontium gracile*; there was lots of candidate material but the only fertile sample turned out to be *O. lineare*. However, there was some compensation in finding *Bartramia pomiformis*, a scarce plant in Cheshire and not seen for over 30 years.

**John Lowell**

---



# NORTHWESTERN NATURALISTS' UNION VASCULAR PLANT SECTION ANNUAL REPORT 2007

Recording activity is still focused mainly to the coast and the coastal plain of vc59 and although the area has been intensively studied results can still be obtained. A batch of records from Ralph Goodchild provided 107 new tetrad records for Aintree SJ39U; 112 new records for the Rufford area and even 83 new records for Maghull SD30W which is a BSBI monitoring scheme and local change tetrad.

Some of the most outstanding finds during 2007 were made by Phil Smith including that of Common Sea-lavender at Marshside (Phil Smith), estimated to be the first record since 1862 and new to vc59 Rock Sea-lavender at Birkdale Green Beach. Phil also found *Atriplex halimus* (Shrubby Orache) established at Hightown.

Whilst carrying out fieldwork at Big Wood and Copperworks Wood I was pleased to find that *Carex strigosa* (Thin Spiked Wood-sedge) was occasional to locally frequent along stream banks, this being a first record for the Chorley Borough.

In the east of vc59 *Carex acutaw* was discovered in a swamp by the River Calder at Full Edge, Burnley SD8531 by Kate Thorne. This is some distance from the Ribble populations near Clitheroe and therefore further exploration of the Calder is to be encouraged.

Finally on a sad note, one of our outstanding contributors to local botany

Eric Kearns has passed away. We enjoyed many happy hours together studying the general flora and *Rubus* in the Goyt and Tame valleys. During in the winter months of the 1990's we would chat away in Bolton Museum whilst entering data into the Recorder database of the Biological Records Centre.

Eric will be remembered as member of the Wild Flower Society, of Graeme Kay's Cheshire Recording Group and of the Lyme Group and as a contributor to the South Lancashire Flora Project. He studied the 10km square SJ99 in great detail providing thousands of 1km records for vice counties 57, 58 and 59.

**David Earl**

# NORTHWESTERN NATURALISTS' UNION VASCULAR PLANT SECTION ANNUAL REPORT 2008

2008 proved a good year for discoveries. A most outstanding find was that of Lax-flowered Sea Lavender at Marshside by Phil Smith Catherine Highfield and Pat Lockwood, a first record for vc59 complementing the Sea Lavender finds made in 2007.

Another excellent find for 2008 was that of Green Spleenwort *Asplenium viride* in the Thurden Valley SD93 by Peter Jepson. The last record traced being that made by CR Ritchings from the Burnley area in 1915. Peter also found *Myosotis stolonifera* on the Darwen Moors (a third record for vc59) and a population of *Equisetum willmotii* in the Ashworth Valley.

Mike Wilcox found *Rorippa islandica* at Clitheroe Park (SD7541) and Graeme Kay provided us with a first SD74 record for *Tilia cordata* at Downham as well as records for *Pilosella officinarum* subsp. *officinarum* and *Pilosella officinarum* subsp. *trichosoma*.

Some surprising finds from the Read area included Marram Grass and Sand Sedge on a disused railway line. A most attractive garden escape *Phuopsis stylosa* (Pink Madder) is becoming established at Wycoller.

To the west *Alisma lanceolatum* and a pale flowered form of Common Figwort *Scrophularia nodosa* var. *bobartii* were found at Yarrow Country Park by Carol Winder.

A few plants of *Carex strigosa* were found in a wood at Standish by Dave and Joyce Earl. Another noteworthy sedge record was *Carex pallescens* at Kem Mill, near Chorley

on the field excursion held in association with the Chorley Natural History Society, a first SD52.

Major progress was made with photography. A new website - **South Lancashire Flora** - has been created by John Somerville at:

[www.johnsomerville.co.uk?SLF/index.htm](http://www.johnsomerville.co.uk?SLF/index.htm)

The site contains thousands of wild flower images taken in vice county 59 by a number of local botanists. Working through the Digital Image Library for the vice-county arranged according to Kent 1992 we have now reached the *Cyperaceae*. A selection of images were shown at my talk to the Preston Society entitled 'Consider the Lilies of the Field' and at the BSBI Exhibition meeting held at Leeds.

**David Earl**

## **SOCIETY DIARY**

### **ACCRINGTON NATURALISTS' AND ANTIQUARIANS' SOCIETY**

Meetings start at 2.30 pm at Antley Methodists' Church Hall, Blackburn Road, Accrington. Non-members welcome - £1.00 minimum lecture fee.

**Sunday 15 February : From Gravel to Grebes** – Creation of the Lancashire Wildlife Trust's Brockhole Reserve.

Sophie Leadsom – Manager

**Sunday 1 March : The Leeds & Liverpool Canal**

Tom Barkley

**Sunday 15 March : The Fascination of Owls** – bringing live birds

Bill Higham – Barn Owl Bill

**Sunday 29 March : AGM & refreshments**

Slides and exhibits welcome

## **ALTRINCHAM AND DISTRICT NATURAL HISTORY SOCIETY**

Except where otherwise stated, all indoor meetings will be held at Bowdon Parish Centre, Stamford Road, Bowdon and will be timed approximately as follows: 7.30, informal gathering, \*\* 7.45pm lecture, 9.15pm tea and chat.

All excursions leave from the public car park, Cecil Road, Hale (behind supermarket) at the times indicated. If you intend to join the excursion please give **three days notice** to the leader. Food and drink for the day and suitable footwear is advisable.

Please note; dogs are not allowed on reserves.

### **Tuesday 24 February: Dunham, 30 years ago**

Illustrated Lecture by Liz Blackman

### **Tuesday 3 March: Social/Supper & Bring and Buy**

Details from the Committee. Limited numbers.

Illustrated Lecture by Brian Dyke

### **Tuesday 10 March: Close Encounters**

Illustrated Lecture by John and Margaret Sixsmith

### **Tuesday 24 March\*\*: Annual General Meeting**

With a short slide show to conclude the evening. Exhibits of natural history are welcome. The supplementary Spring/Summer programme will be available at this meeting.

### **Saturday 4 April: Ploughman's Lunch**

Details from the Committee

### **Tuesday 14 April: A Pocketful of Posies**

Illustrated Lecture by Ann Metcalfe

### **Tuesday 12 May: To be announced**

### **Saturday 27 June: Loggerheads, Clwyd**

NB 9.30 a.m. start. A full day excursion for limestone plants. Contact 0161 980 8645

### **Saturday 18 July: Venue to be announced**

A full day excursion

### **Tuesday 21 July: Annual Barbecue**

Details from the Committee

### **Tuesday 22 September: First indoor meeting**

## **CHEADLE HULME & BRAMHALL NATURAL HISTORY SOCIETY**

Indoor meetings are held in St. Michael's Church Hall, St. Michael's Avenue, Bramhall, Stockport at 7.30pm unless otherwise indicated

### **Thursday 19 February : AGM (7.15pm) + The Natural History of Chios**

Michael Taylor

### **Thursday 5 March : Hot Pot Supper**

### **Thursday 19 March : Urban Wildlife**

Brian Halworth

### **Thursday 16 April : Nature on our Doorstep**

Tony Pioli

## **MANCHESTER MICROSCOPICAL AND NATURAL HISTORY SOCIETY**

All meetings (except November) are held in the Stopford Building (Medical School) University of Manchester M13 9PT, corner of Oxford Road and Aker Street (next to the Holy Name Church), Manchester, from 7 p.m. to 9 p.m. **All are welcome** – feel free to bring a friend or two. Non-members and members of other Societies are welcome. The Society's library will be available at all Stopford meetings and includes copies of our Newsletters and literature on microscopic history, as well as many books on microscopy and Natural History.

See also our Internet site at <http://www.manchestermicroscopical.org.uk>

**Thursday 19 February : Bioimaging** - A guided tour of a state of the art Bioimaging Facility

Peter March & colleagues, Manchester University

**Thursday 19 March : Members' Exhibits and Gossip Meeting** 7.00-7.45pm All exhibits, large or small, will be of interest, especially from beginners.

**Demonstration – Preparing Diatoms** 7.45-8.30pm

Derek Haworth, MMS

**Annual General Meeting** 8.30-9.00pm

**Thursday 23 April : Life & Death in Freshwater -What can we see - with or without a lens?**

John Hobson

## **NORTHWESTERN NATURALISTS' UNION - BRYOPHYTE AND LICHENS SECTION**

All meetings on Saturdays, starting at 10.30 am ( except 10 May and 13 Sept., 11.00 am). Bring food and clothing adequate for a full day in rough country and bad weather. Please check with section secretary (John Lowell - 0161 485 6892) a day or so before the meeting, in case of cancellation or changes. "Beginners" are welcome any ANY meeting, but especially so at those marked \* , which will cater particularly for them.

**Saturday 14 February: Knot Hill**

Meet at SD 947 008. Leaders Alan & Norman Bamforth

**\*Saturday 14 March: Rostherne NNR**

Meet (to be arranged). Leader Mike Walton

**Saturday 18 April: Woodwell, Silverdale**

Meet SD 4645 7437. Leaders Jim Adams & Wendy Nelson

**Saturday 2 May: Sinderland:**

Meet Trans Pennine Trail car park, SJ 751 889. Leader Audrey Locksley

**Saturday 6 June: Lathkill Dale**

Meet at Car Park, SK 203 665. Leader Martha Newton

**†Saturday 18 July: Little Budworth Country Park**

Meet at car park, SJ 591 654. Leader Len Johnson

**Saturday 15 August: White Coppice**

Meet at N end of Anglezarke Reservoir, SD 616 179. Leader John Lowell

**Saturday 19 September: Bretton Clough**

Meet on roadside at SK 199 800 Leader Joan Egan.

**\*Saturday 17 October: Watergrove Reservoir**

Meet SD 912 176. Leader Martha Newton

**Saturday 21 November: Castleshaw**

Meet SD 997 092. Leaders Alan & Norman Bamforth

**Saturday 19 December: Wayoh**

Meet in western of two car parks at Turton & Entwistle Reservoir, SD 721 173. Leader John Lowell

**PRESTON BIRD WATCHING AND NATURAL HISTORY SOCIETY**

Meetings at St. Mary's Church Hall, Cop Lane, Penwortham.

Further details from Steve Halliwell 01772 705468, [www.prestonsociety.co.uk](http://www.prestonsociety.co.uk)

**Monday 16 February : Half Term or Member's Open Evening**

**Monday 23 February : A Year at Marshside**

Graham Clarkson - R.S.P.B.

**Monday 2 March : Waterworld – A Digital Dream**

Jason Smalley

**Monday 9 March : A Look at Migration**

Mike Carrier - Solway Ringing Group

**Monday 16 March : Seagulls to Eagles**

Peter Smith

**Monday 23 March : Wildlife - Wild Places**

John Gardner

**Monday 30 March : Images of the Night Sky - Digital photography through a telescope**

Dr. Keith Robinson - Former Curator of the Jeremiah Horrocks Observatory

**Monday 6 April : Annual General Meeting**

**ROCHDALE FIELD NATURALISTS' SOCIETY**

[www.rochdalefieldnaturalistsociety.co.uk](http://www.rochdalefieldnaturalistsociety.co.uk)

**Indoor Meetings** are held on the second Thursday of the month, September to April, at Cutgate Baptist Church, Edenfield Road, Rochdale. Charges: Members £1.00, Non-members £2.00. Enquiries: 01706 630707 and 814844

**Field Excursions** : All Excursions depart from the cul-de-sac at Manchester Road, Rochdale. Time: Coaches 0900hrs, Cars 1000hrs. Coaches return at 1700hrs except during the months of November, December, January and February when return is at 1600hrs Queries: Field excursions – contact Barbara Waddington on 01706 658260 / Coach bookings – contact Fred Royle on 01706 644394 Coach Price: Members £12, Non-members £14.

**Thursday, 12 February : Diving around Scotland (or what marine naturalists can do for marine conservation)**

David Moss

**Saturday 14<sup>th</sup> February : Carsington Water, Derbys. (+ optional Hopton Hall Snow-drop garden – fee payable) - Coach Trip**

RCowley.

**Saturday 28<sup>th</sup> February : Rowley Lake/Lee Green Reservoir - Car Trip**

C. Flynn.

**Thursday, 12 March : Hide and Seek – Scottish wildlife: peregrines, merlins, foxes and otters**

Mick Durham

**Saturday 14 March : Hest Bank, Lancs. - Coach Trip**

J. Taylor

**Saturday 28 March : Hopwood, Middleton - Car Trip**

H. Bibby.

**Thursday, 16 April : Members' Evening (all welcome)**

**Saturday 18 April : Sedbergh, Cumbria - Coach Trip**

A. Cross

**Saturday 25 April : Roch Valley, Rochdale - Car Trip**

S. Allen.

**Saturday 16 May : South Stack, Anglesey - Coach Trip**

S. Allen.

**Saturday 30 May : Clitheroe, Lancs. - Car Trip**

S. Carr & B. Newing.

**Saturday 13 June : Roudsea Reserve, Cumbria - Coach Trip**

S. Carr & B. Newing.

**Saturday 27 June : Hawkshaw, Bury - Car Trip**

M. Gartside & B. Tweedale.

**Saturday 11 July : Warton Crag, Lancs. - Coach Trip**

P. Stevens.

**Saturday 25 July : Grassington/Hebden, Yorks.- Car Trip (NOTE: 9.00 a.m.start)**

F. Royle.

**Saturday 8 August : Ainsdale, Lancs. - Coach Trip**

P.& B. Waddington

**Saturday 22 August : Rakewood, Hollingworth Lake - Car Trip**

M. Colley

**Saturday 12 September : Dane Valley, Staffs/Cheshire - Coach Trip**

E. & D. Clutterbuck

**Saturday 26 September : Ogden, Newhey – Car Trip**

J. Taylor

**Saturday 10 October : Delamere Forest, Cheshire – Coach Trip**

P. Maddock

**Saturday 24 October : Luddenden Valley – Car Trip**

E. & D. Clutterbuck

**SADDLEWORTH NATURALISTS**

All events listed are indoor meetings held at 7.30pm at the Brownhill Visitors' Centre at Dobcross.

**Wednesday 11 March : Dragonflies**

Graham Jones

**Wednesday 8 April : AGM**

Plus members' digital pictures and light refreshments

**BLANK**



